

built today - designed for tomorrow...

Zarina  *Garden City*



Simco Holdings Limited
a member of Simco Group



Introduction:

Simco Holdings Limited, a member of Simco Group, presents Zarina Garden City almost at the heart of Dakkhin Khan Uttara, Dhaka, adjacent to Sector 4, Uttara. The Project will be built on 24 kathas of land, 50% of which has been left open for plenty of light, fresh air and open space.

This exceptional collection of apartments of different types, sizes of state of art designs are located in two beautifully designed structures, suitable for middle income groups.

Based on the concept “**time to come out of concrete jungle**” will give the residents of this beautiful creation, open space on all sides with plenty of light and fresh air. The compound will provide safety and security for the children of the complex residents as it is a secure and gated community.

The architectural plan features 3 bed rooms and 3 bathrooms, living room, family room, spacious kitchen and dinning spaces, veranda and much more. Apartments are designed to have plenty of light and air all day long for healthy living.

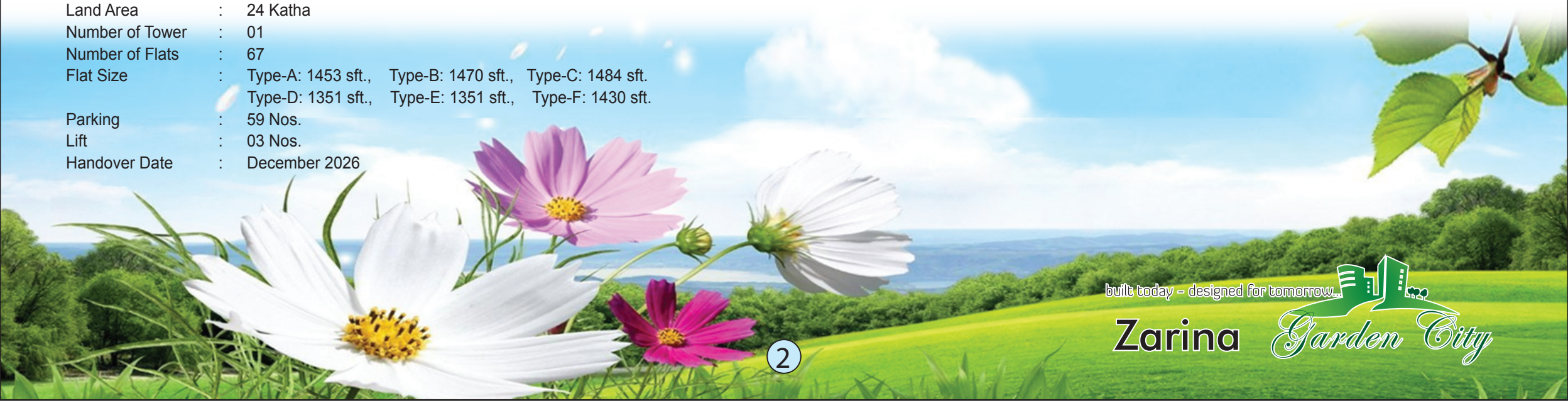
Strictly following the BNBC code and American Concrete Institute (ACI) code. The structure will be capable of withstanding any natural forces like cyclone, high wind and earthquake. Professional engineering team will be on site every day to ensure quality construction and elegant finishing.

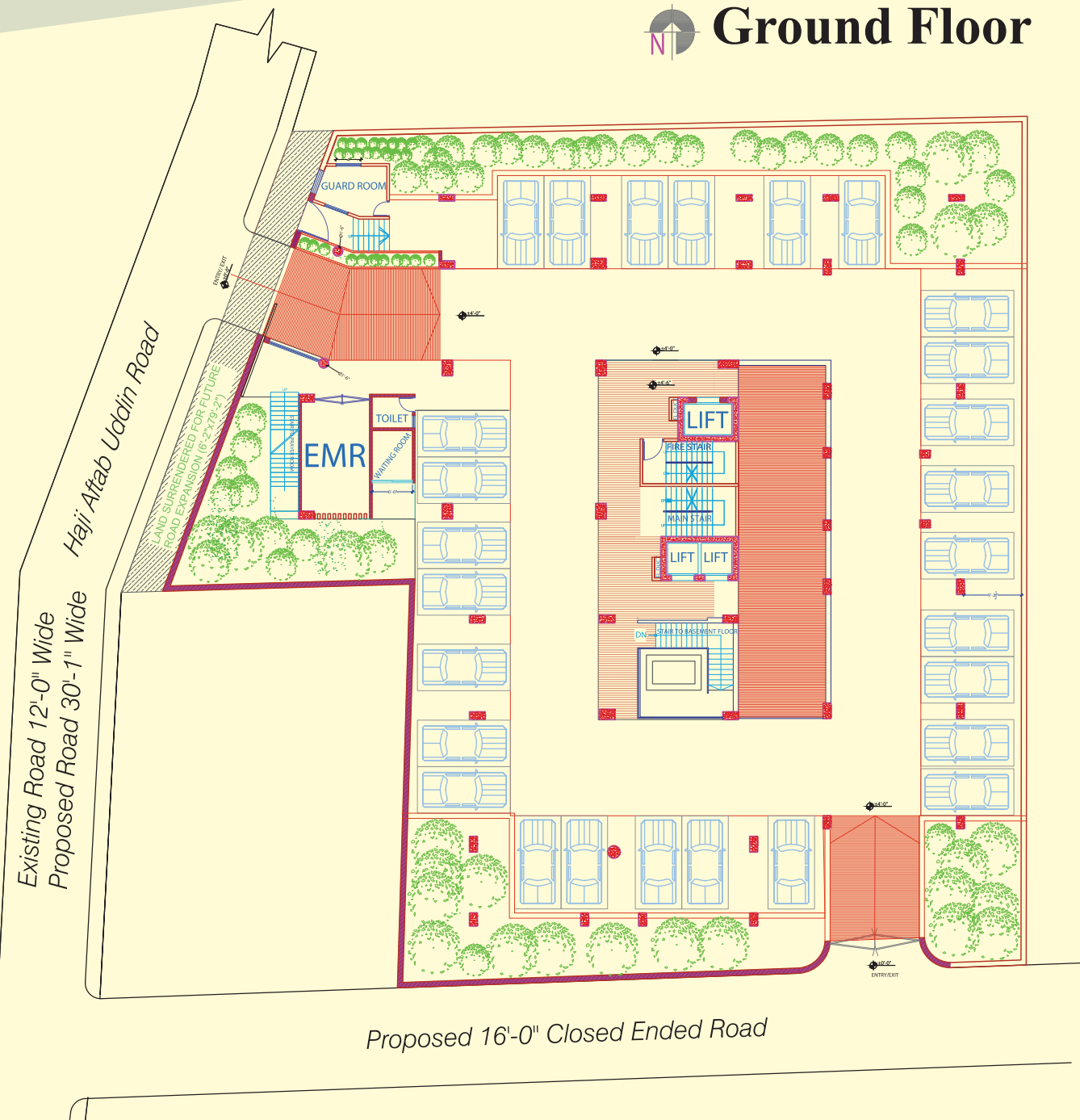
Located in the heart of the Uttara the project is extremely conveniently located. Surrounded by all necessary amenities Schools and Colleges, Universities, Modern Hospitals, Shopping Malls, Clubs and other recreational facilities.

ZarinaGarden City is created based on our “**Built today-Designed for Tomorrow**” concept, a gated community with all the safety and security in mind for modern living, for healthy upbringing of your family and heavenly living in security, comfort and luxury.

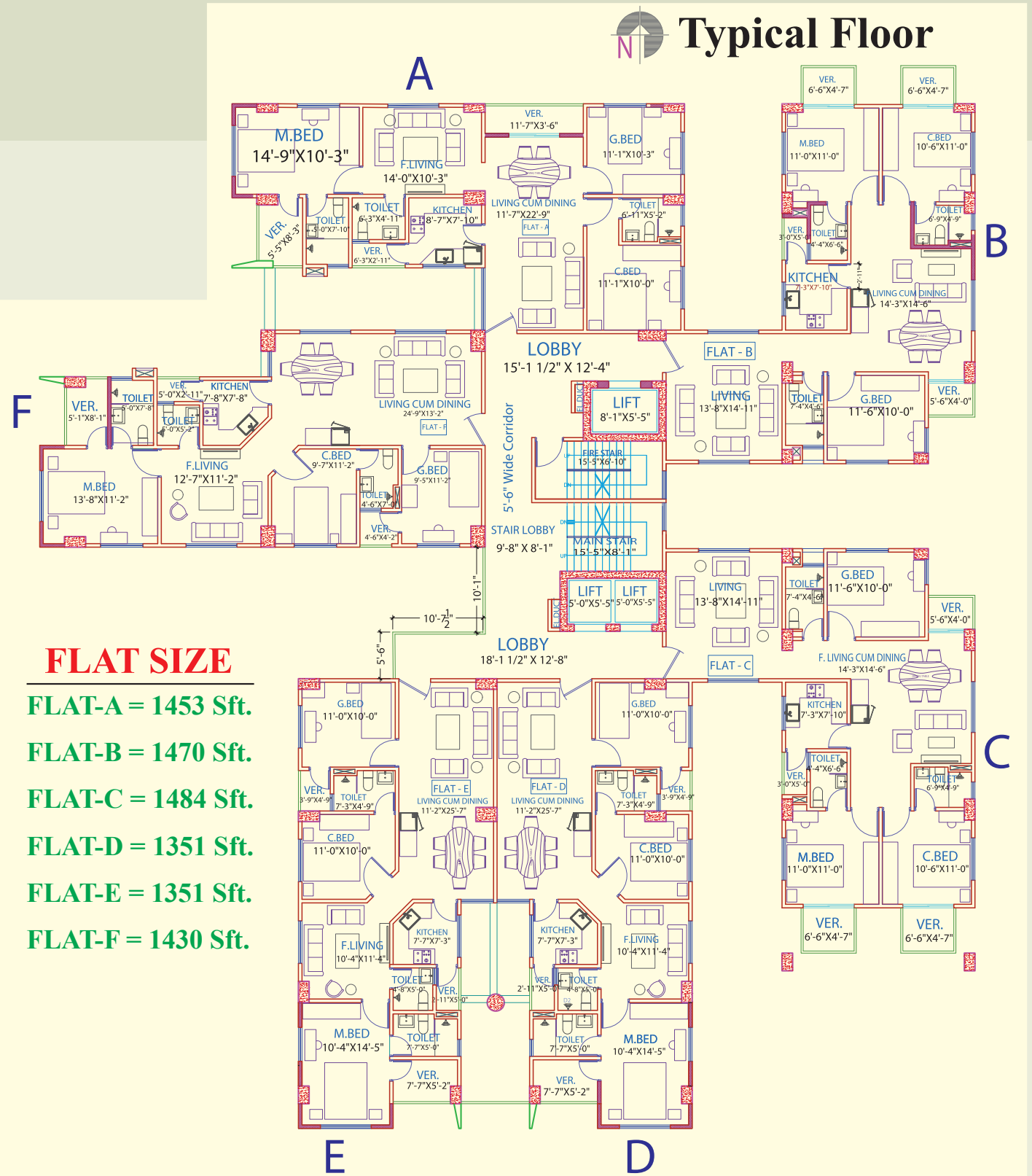
Project Overview:

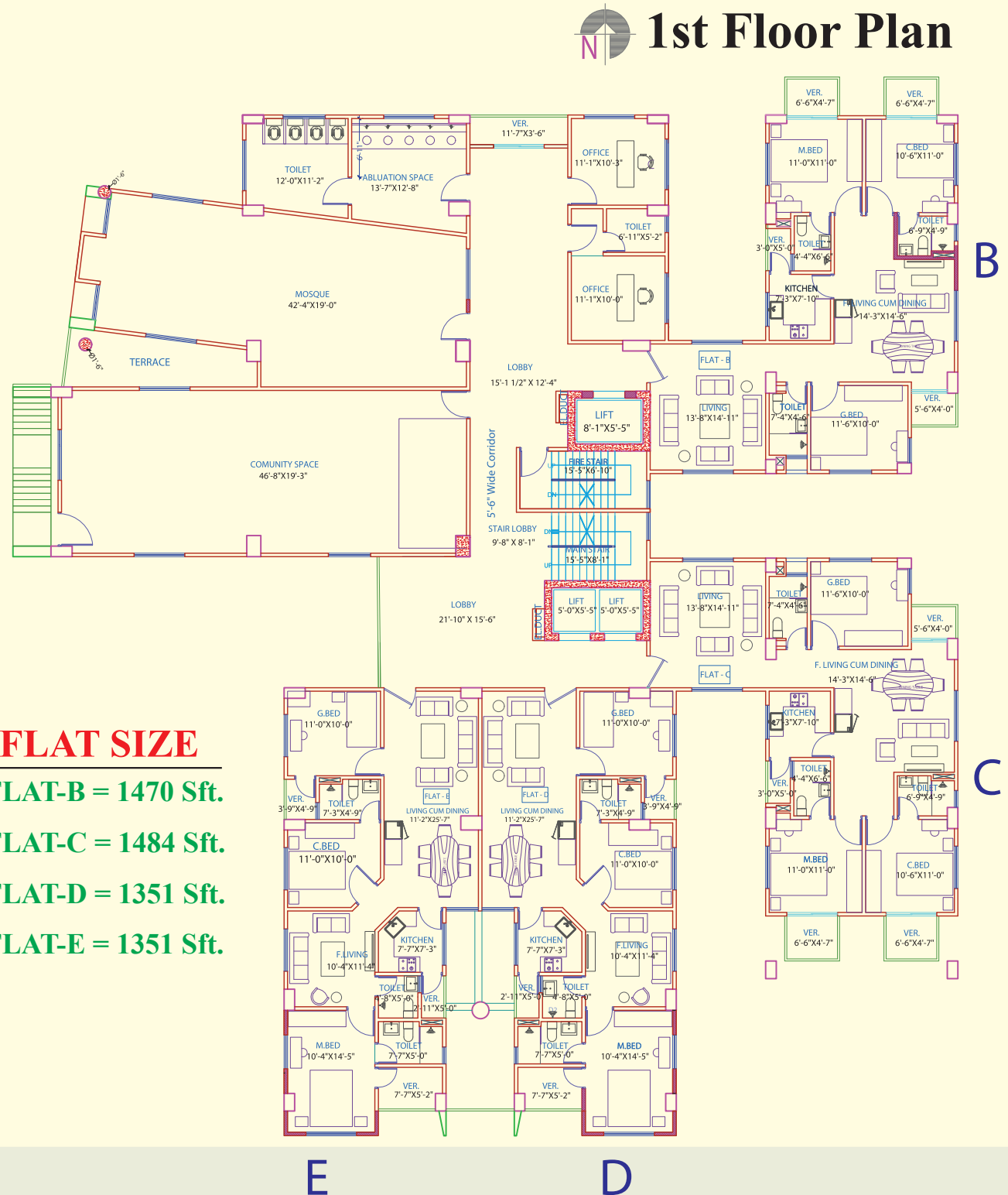
| | | |
|-----------------|---|--|
| Project Name | : | Zarina Garden City (1 Basement + G + 12 Storied Building) |
| Location | : | Dakkhin Khan, Moshair Chalabon Uttara, Dhaka. |
| Land Area | : | 24 Katha |
| Number of Tower | : | 01 |
| Number of Flats | : | 67 |
| Flat Size | : | Type-A: 1453 sft., Type-B: 1470 sft., Type-C: 1484 sft. Type-D: 1351 sft., Type-E: 1351 sft., Type-F: 1430 sft. |
| Parking | : | 59 Nos. |
| Lift | : | 03 Nos. |
| Handover Date | : | December 2026 |



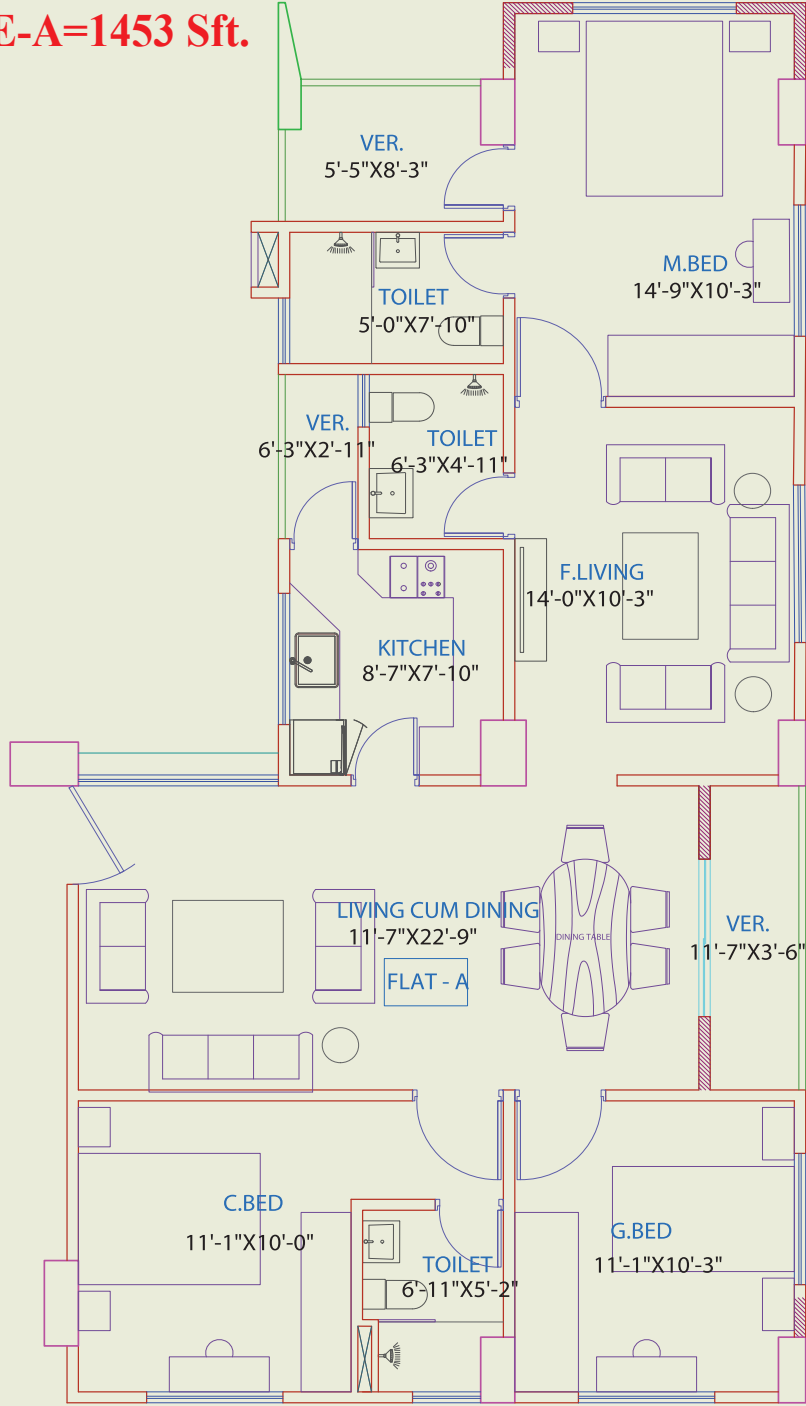




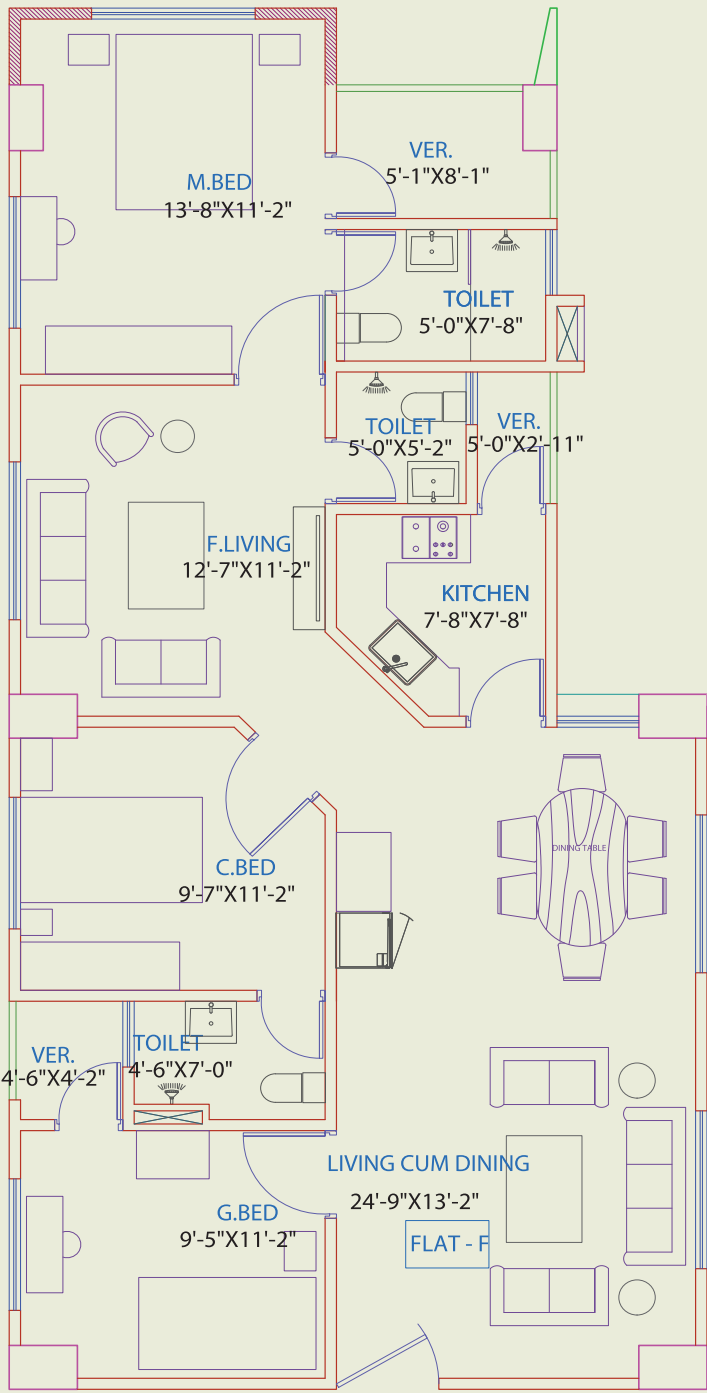




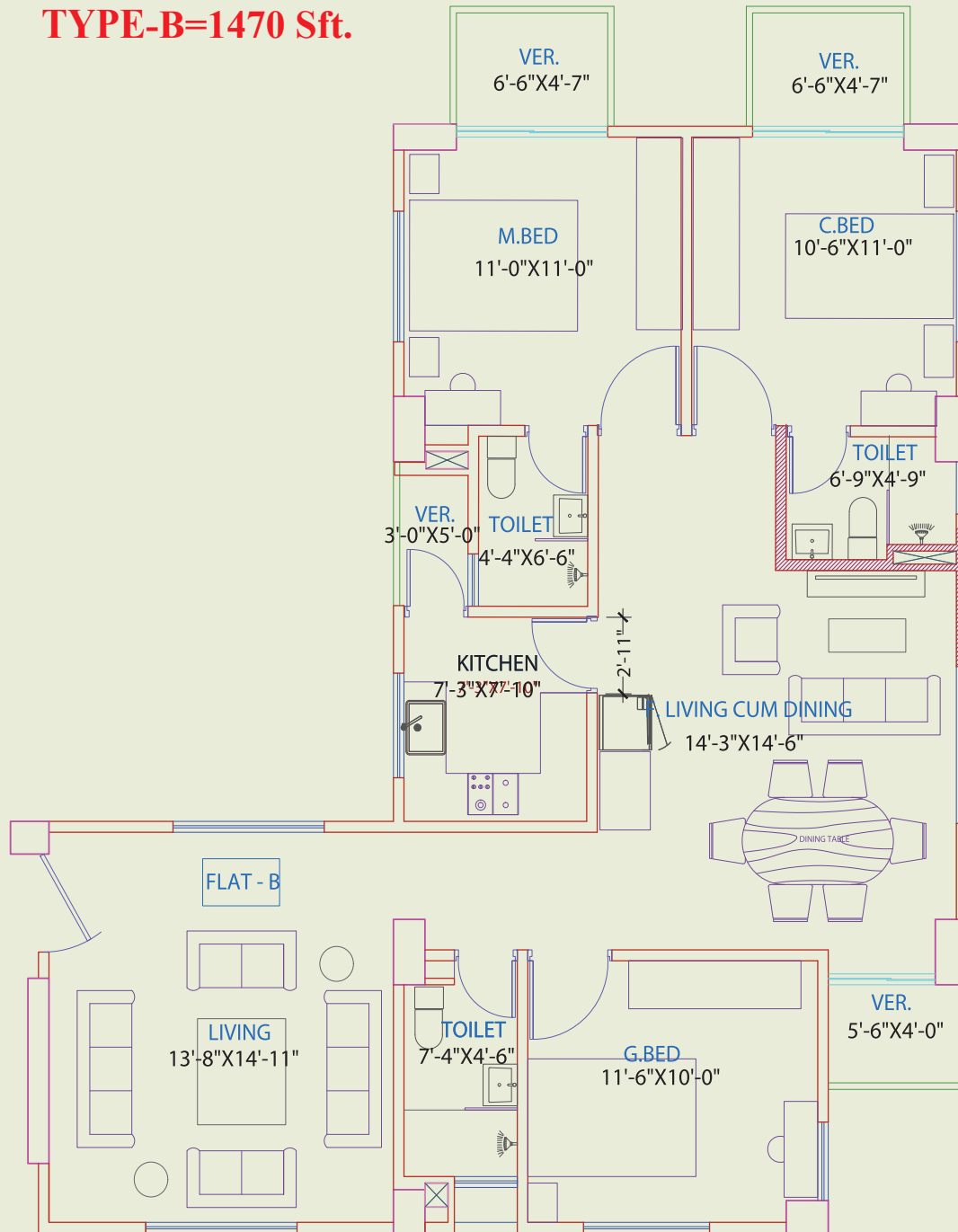
TYPE-A=1453 Sft.



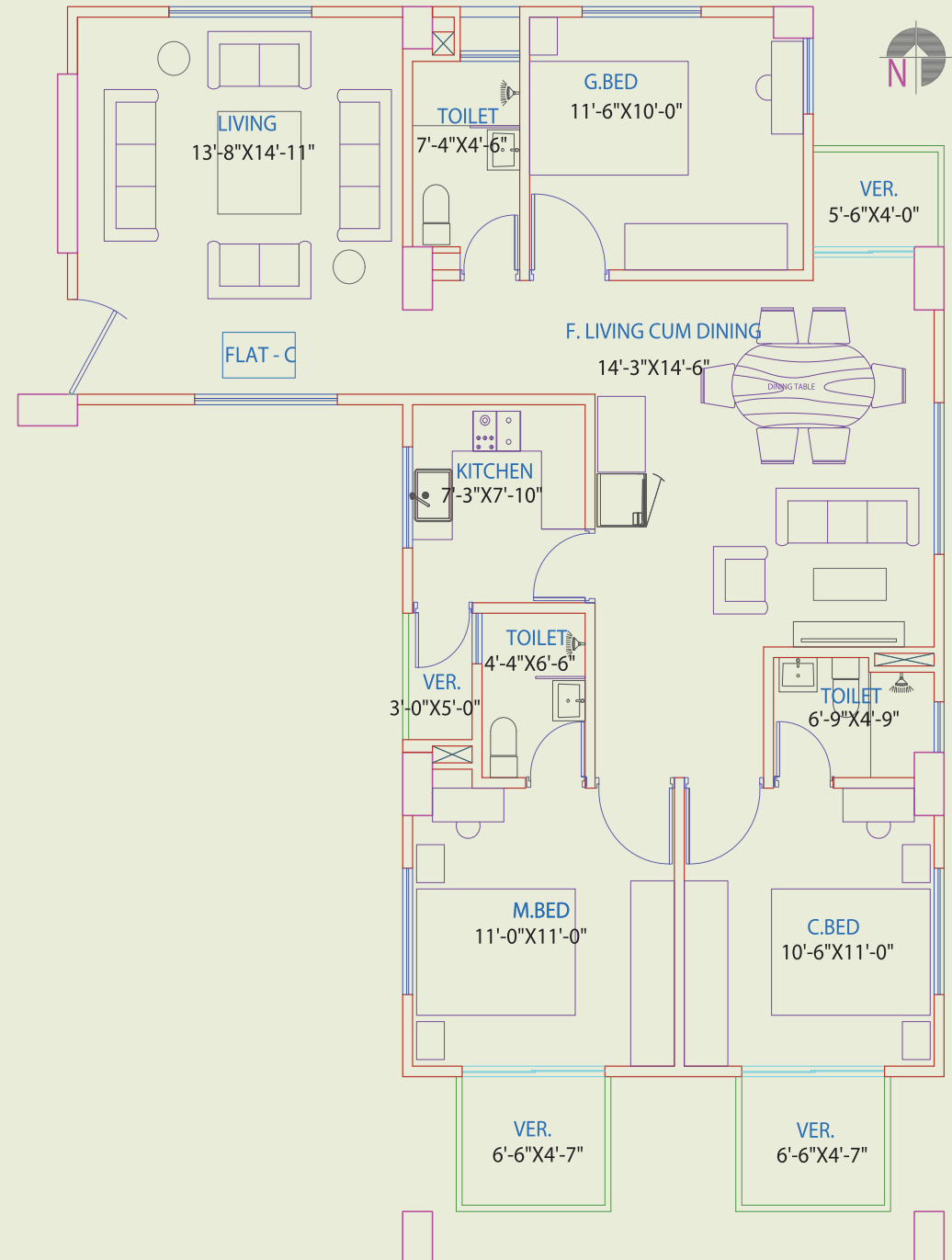
TYPE-F=1430 Sft.



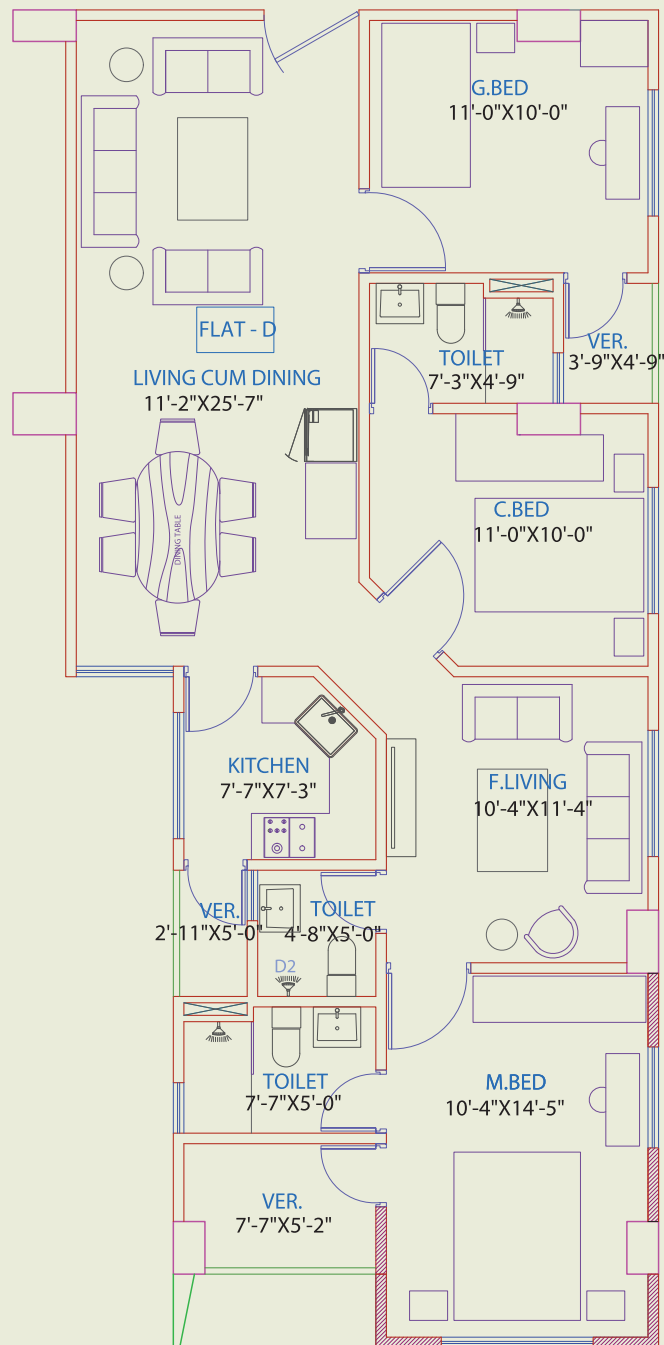
TYPE-B=1470 Sft.



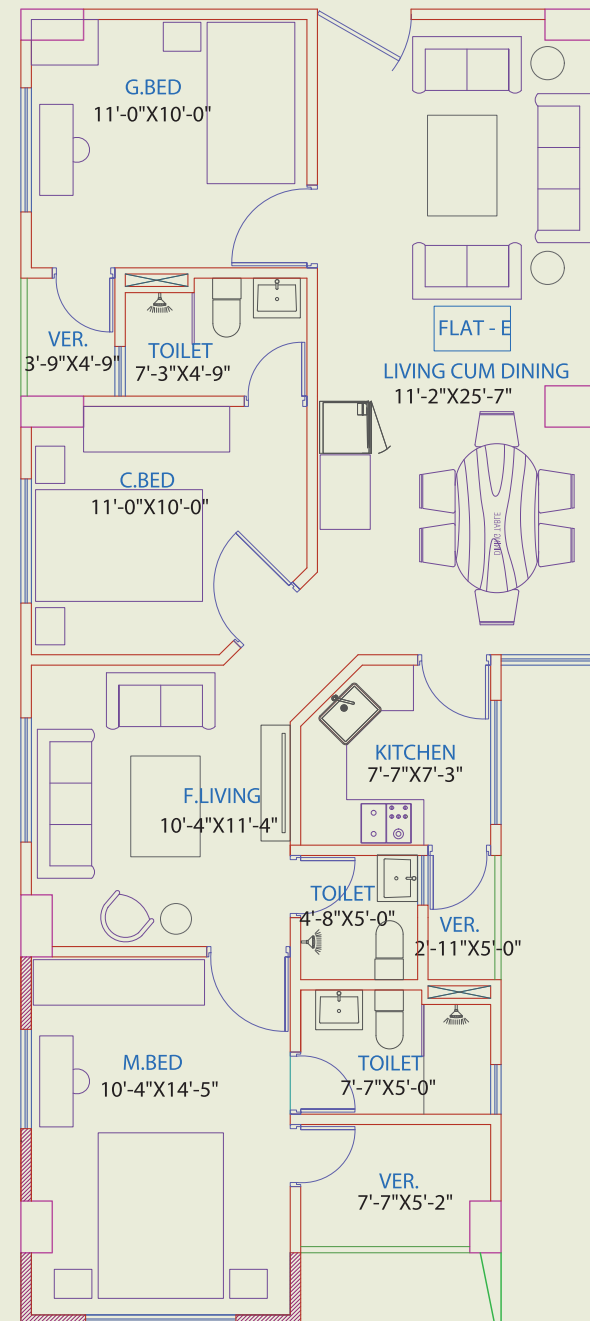
TYPE-C=1484 Sft.



TYPE-D=1351 Sft.



TYPE-E=1351 Sft.



Standard Features

Engineering Features

- ◆ Reputed professional consultant will prepare architectural planning and structural design.
- ◆ Structural design parameters based on American Concrete Institute (ACI) and American Society for Testing Materials (ASTM) codes.
- ◆ Heavy reinforced cement concrete raft foundation.
- ◆ Systematic structural combination of steel reinforced concrete frames & shear wall core.
- ◆ Floor slabs all reinforced cement concrete.
- ◆ Sub-soil investigation and soil composition comprehensively by latest testing equipment and laboratory techniques.
- ◆ Comprehensive section by section checking and testing of all steel reinforcement by professional designers and supervising engineers.
- ◆ Direct supervision at every stage of construction by a team of experienced and qualified professional to ensure highest quality of workmanship.

Supervision

- ◆ Experienced engineers will supervise directly at every stage of construction to ensure highest quality work-manship.
- ◆ Full supervision and quality assured by the experts who have many years of practical experience on supervision and quality control of a numerous residential and commercial building projects.

Apartment Features

Doors:

- ◆ Wooden Door for main entrance door with foreign door lock and handle.
- ◆ Check viewer and safety chain.
- ◆ Good quality calling bell switch beside the main door.
- ◆ Internal door frames will be made from wood.
- ◆ Veneer wood shutter door for internal door.
- ◆ Best quality PVC door frame and shutter for toilet.

Windows:

- ◆ Thai Aluminium sliding windows with mosquito net provision at external window.
- ◆ Rain water barrier in external window.
- ◆ Standard safety grill in all windows with matching enamel paint.

Walls:

- ◆ All internal & external walls will be 5" brick walls with 1st class bricks as per architectural drawing.
- ◆ Wall surface will be finished with smooth plaster and plastic paint.

Room Finishes:

- ◆ RAK or equivalent Homogenous floor tiles (16"×16") in all rooms.
- ◆ Plastic paint in all internal walls and distemper paint on ceilings (Jotun/Berger/Aqua/Dulux/Equivalent).

Standard Amenities

Veranda:

- ◆ Veranda railing will be as per design.
- ◆ Rain water barrier in all verandas.
- ◆ RAK/Equivalent floor tiles (16"×16").

Painting & Polishing:

- ◆ Plastic paint in internal walls (Jotun/Berger/Aqua/Dulux/Equivalent).
- ◆ All grill, railing and metallic surfaces will be painted with enamel paint.
- ◆ Good quality weather coat at exposed surface of building (Jotun/Berger/Aqua/Dulux/Equivalent).

Bathrooms:

- ◆ RAK/STAR/DBL/Sheltech Eqv. ceramic tiles (10"×13") up to false slab in all bath and (8"×12") size tiles up to 5' height in servant bath.
- ◆ RAK/STAR Eqv. commode and basin in all bathrooms (excluding servant toilet).
- ◆ Long pan with plastic lowdown in servant toilet of RAK/STAR/equivalent.
- ◆ Standard quality soap cases, towel rail, paper holder, glass shelf will be the best quality local made at all bathrooms (excluding servant toilet).



- ◆ Ceramic floor tiles in all bathrooms (12"×12") of RAK/STAR Equivalent tiles with matching wall tiles.
- ◆ Provision for hot and cold water in master bathroom and 2nd bathroom.
- ◆ Soap case, towel rail in servant toilet.
- ◆ Large size (18"×24") mirror in all bathrooms except servant bathroom.
- ◆ Grating in all bathrooms & kitchen.
- ◆ Cockroach grating in master bathroom.

Electrical:

- ◆ Best quality wires (BRB/POLY/PARTEX/Equiv.).
- ◆ Imported switches and sockets.
- ◆ Separate electric distribution box for each apartment.
- ◆ All power outlets with earth connection.
- ◆ Concealed intercom line.
- ◆ Satellite TV cable in the livingroom.
- ◆ AC provision for master bed, 2nd bed and living room.
- ◆ 3 emergency light and fan points to serve at the time of power failure.

Kitchen Features:

- ◆ Concrete platform for sink and gas burner.
- ◆ One high polished stainless steel sink with mixture (Turkey/Malaysia/Thailand/Equiv.)
- ◆ Concealed hot and cold water line.
- ◆ Exhaust fan located at any suitable place.
- ◆ Homogeneous RAK/Equiv. floor tiles (16"×16").
- ◆ Glazed wall tiles upto 7' height (RAK/Equiv.)

Building Entrance:

- ◆ Secured decorative MS gate with proper lighting system as per design.
- ◆ Comfortable internal driveway.

Reception Lobby:

- ◆ Reception desk with intercom system to connect each apartment.
- ◆ Tiled floor in reception area.
- ◆ Security guards and driver's waiting room and toilet.

Lift Lobbies and Staircases:

- ◆ Three passenger lifts.
- ◆ Tiled floor in lift lobby.

Generators:

- ◆ One residential standby generator will be provided.
- ◆ Generator will serve lift, water pump, stairs, community room and all emergency points.

Parking:

- ◆ Enough parking spaces on the basement and ground floors. The parking spaces will be reserved through marking the respective apartment numbers.

Substation and Water Pump:

- ◆ A substation will be provided on the ground floor with the required capacity.
- ◆ Substation equipment will be best quality (local standard).
- ◆ 1 water lifting pump (Pedrollo/Sear/eqiv.) with auto change over switch (one standby).

Utility Connection:

- ◆ LPG Gas pipeline connection in each apartment.
- ◆ Each apartment will have independent electric meter.

Roof Top:

- ◆ Water proofing for protection.
- ◆ Garden, cloth drying area.



built today - designed for tomorrow...

Zarina Garden City



Simco Holdings Limited

Corporate Office : ABC Skyrise Tower (13th Floor),
26, Shahjalal Avenue, Sector-04, Azampur, Uttara, Dhaka -1230
Sales Hotline : 01774875741, 01757412696
E-mail : marketing@simcocorp.com
Web : www.simcoholdings.org
<https://m.facebook.com/simcoholdingsltd>